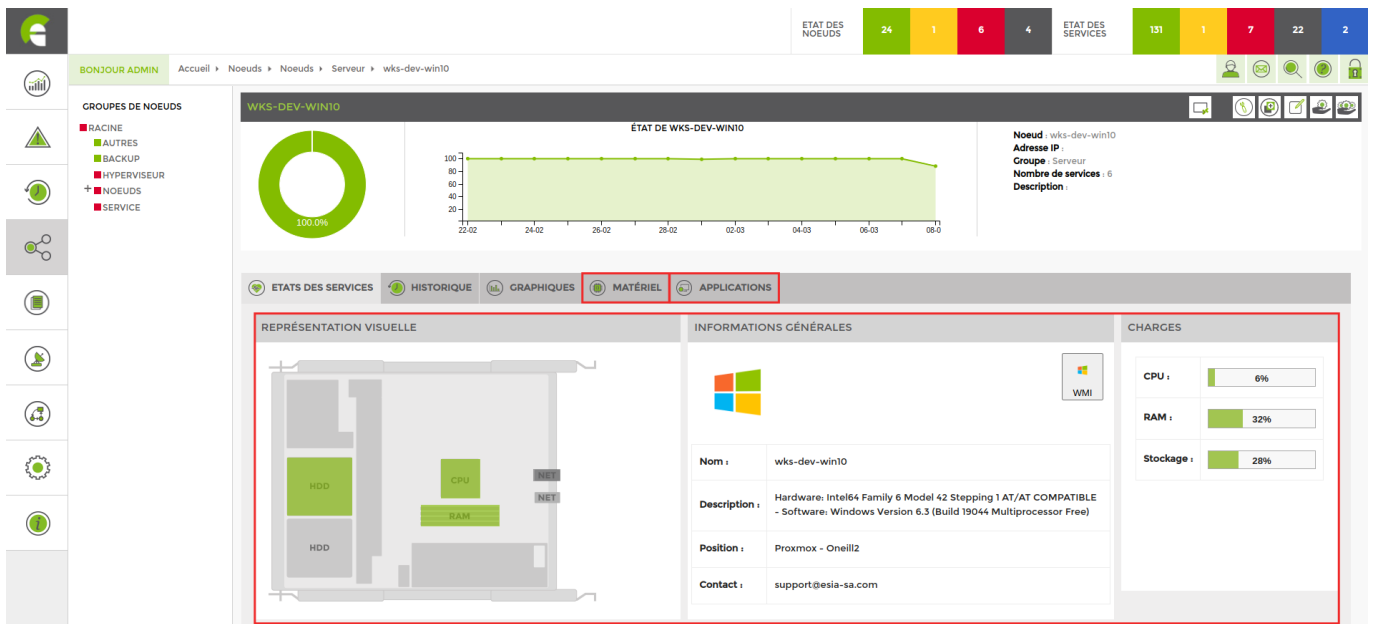


# Server/NAS interface

## General

In addition to the information found on the [General page of a node](#), the page for devices such as servers, NAS and other elements of the same type will have the following elements.



This page provides you with a **visual representation** **general information** and the **loads** (CPU, RAM, storage).

## Hardware

In the « **matériel** » From « **mémoire et disques** » This tab groups together all the hard disks and other peripherals connected to the device. This is also where you can add them for monitoring.

MÉMOIRES ET DISQUES

AJOUTER	DESCRIPTION	ESPACE UTILISÉ	ESPACE LIBRE	CAPACITÉ	POURCENTAGE D'UTILISATION	POURCENTAGE DE LIBRE	TAILLE DES BLOCS
	C:\\ Label: Serial Number 6cdf8302	27 GB	72 GB	99 GB	28%	72%	4096
<input checked="" type="checkbox"/> D:	D:\\ Label:DATA Serial Number cc711a8e	37 MB	10 GB	10 GB	1%	99%	4096
	F:\\	0	0	0	0%	0%	0
<input type="checkbox"/> Virtual Memory	Mémoire virtuelle	3 GB	6 GB	9 GB	33%	67%	65536
<input type="checkbox"/> Physical Memory	Mémoire physique	2 GB	6 GB	8 GB	24%	76%	65536

ACTIONS GROUPEES

Don't forget to click on « **ajouter** » at the bottom of the page.

## Application

### System

In the tab « **application** » then « **système** » tab, you will find information about the system.

SYSTÈME SERVICES WINDOWS IP UDP TCP

INFOS SYSTÈME :

Nombre de processus :	141	Processus maximum :	Illimité
Paramètres de boot :		Sessions ouvertes :	0
Uptime :	01 jours, 01:29	Date locale :	16:37:42 08/03/2023

Further down you can see the list of processes currently running. This is also where you can add them for supervision. Don't forget to click on « **ajouter** » at the bottom of the page.

LISTE DES PROCESSUS							
AJOUTER	NOM	INDEX OU PID	CHEMIN DE L'EXÉCUTABLE	PARAMÈTRES	CONSOMMATION CPU TOTALE (SEC)	CONSOMMATION MÉMOIRE	
<input type="checkbox"/>	System Idle Process	1			361278.48	8 KB	
<input type="checkbox"/>	System	4			134.37	120 KB	
<input type="checkbox"/>	Registry	108			1.48	64 MB	
<input type="checkbox"/>	smss.exe	392			0.23	1 MB	
<input type="checkbox"/>	csrss.exe	496			7.01	6 MB	
<input type="checkbox"/>	LogonUI.exe	500		/flags:0x2 /state0:0xa3bea855 /state1:0x41c64e6d	0.95	49 MB	
<input type="checkbox"/>	wininit.exe	572			0.14	7 MB	
<input type="checkbox"/>	csrss.exe	592			0.18	5 MB	
<input type="checkbox"/>	dwm.exe	596			0.42	36 MB	
<input type="checkbox"/>	winlogon.exe	668			0.1	11 MB	
<input type="checkbox"/>	services.exe	712			15.92	10 MB	
<input type="checkbox"/>	lsass.exe	740	C:\Windows\system32\		39.67	17 MB	
<input type="checkbox"/>	svchost.exe	852	C:\Windows\system32\	-k DcomLaunch -p	19.54	18 MB	

### Service example

Processus - services\_exe OK 08-03-2023 17:14:05 1 process matching services.exe (> 0), Mem : 9.9Mb OK, CPU Core : 0% OK

- Checks that the service is running correctly
- Checks the amount of memory being used
- Checks the CPU load

You can change the **minimum** and **maximum threshold** in the service parameters.

Nom du service:  Intervalle:  secondes Priorité:

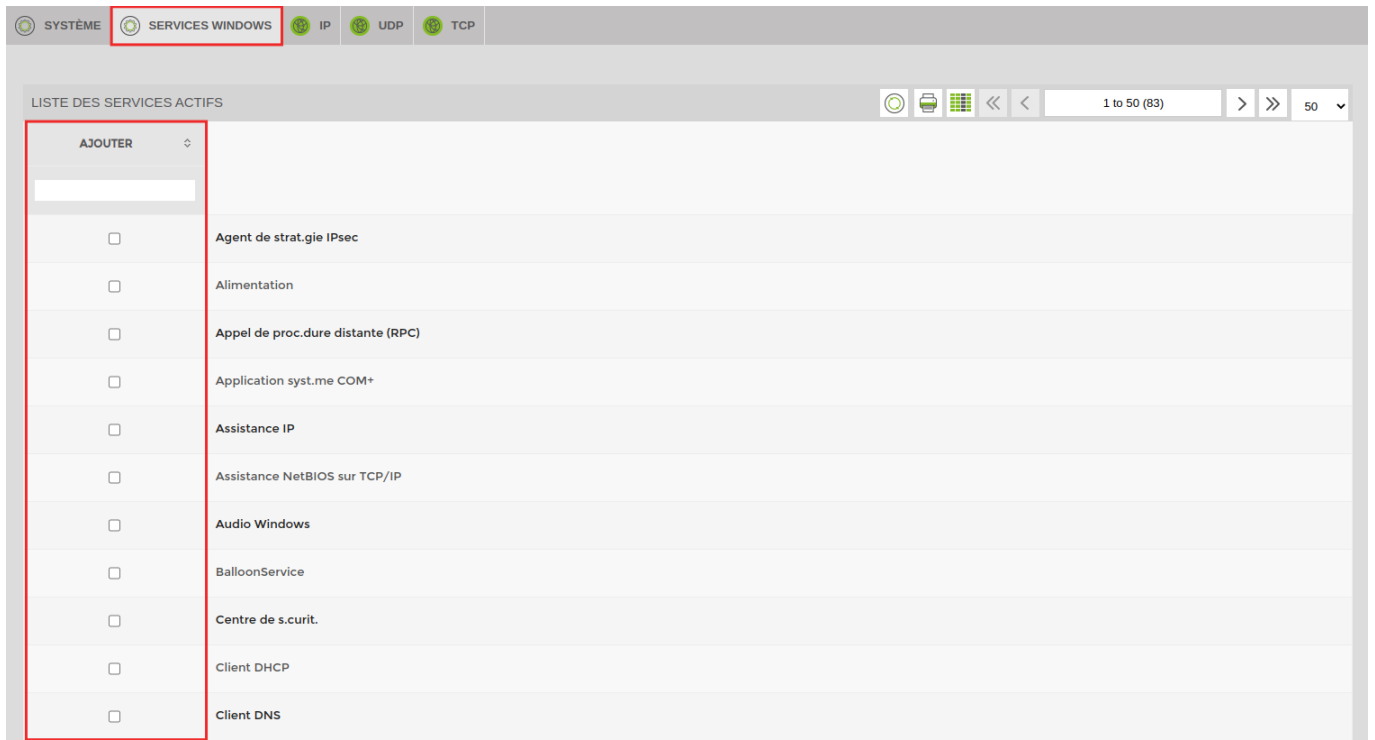
Nom du processus:

Paramètres du service:

- Alerte Memoire:  Mb
- Critique Memoire:  Mb
- Alerte CPU Core:  %
- Critique CPU Core:  %

### Windows services

If you have a Windows machine, the « **services windows** » tab appears. You can add a service to be supervised.



Don't forget to click on « **ajouter** » at the bottom of the page.

From:  
<https://wiki.esia-sa.com/> - **Esia Wiki**

Permanent link:  
[https://wiki.esia-sa.com/en/interface/noeud\\_serveur](https://wiki.esia-sa.com/en/interface/noeud_serveur)

Last update: **2023/11/09 18:03**

